



Applications

From construction work to natural resource development, the applications for MAEDA mini cranes are limitless.

1. Glazing Works
2. Curtain Wall Installation
3. Restricted Access
4. Rooftop Work
5. Steel Erection & Building Construction
6. Civil Construction
7. Residential Construction
8. Plant, Factory & Automotive
9. Limited Access
10. Facility Equipment Installation
11. Artwork Installation
12. Aviation Industry
13. Stonework
14. Power Stations
15. Oil & Gas Industry
16. Tunnel / Underground
17. Railway
18. Works on Uneven Ground
19. Military
20. Forestry
21. Marine Construction, Ship Building and On Board Ships
22. Other Works



MAEDA SEISAKUSHO CO., LTD.

Overseas Sales Dept.
No.1095, Onbegawa, Shinonoi, Nagano-City, Nagano-Pref. 388-8522 Japan
TEL.+81(0)26 292 2228 FAX.+81(0)26 293 8499
URL : www.maedaminicranes.com E-mail : contact@maesei.co.jp



Precautions for safe operation

* Read the Operation Manual before operating.
* For crane work, follow all regulations of the country of use relating to safe operation of the machinery.
* Models available in each country may differ.

1. Glazing Works

By using vacuum glass handlers hung from the hook block or installed on a searcher hook, glass can be installed where required even just beneath the roof. Another popular application for mini spider cranes in indoor, confined spaces, narrow spaces, and narrow pathway places. The MK knuckleboom series was born to realize more efficient glazing works.



MC104C



MC285C SH Germany



MC405C Austria



MC285C SH Germany



MC305C Austria



MC305C



LC383 Belgium



MC285C Germany



MC285C Residence US



MK1033C Belgium



MK1033C Austria



MK1033C Obstacle



MC305C Bristol Airport



MK1033 Belgium



LC383 Belgium

2. Restricted Access

Even in confined places or spaces with obstacles, our spider cranes play an important role in safety with four supportive outriggers. By using the working range restriction feature, safe lifting work can be achieved even with obstacles you want to avoid contact such as power lines. Also the LC/CC series with its short tail swing advantage are most suitable for works in confined locations that bigger cranes cannot access.



MC104C Limited Job Site Access



MC104C Graveyard Japan



MC104C Graveyard Japan



MC285C Poland



MC174C Obstacles



MC285C



MC405C Power Station US



MC405C



MC285C Restricted Access



MC405C Swimming Pool Bavaria



MC405C Plant Poland



LC785



MK1033C Obstacle

3. Curtain Wall Installation

Mini cranes can be transported to the upper floors of high rise buildings by service elevators and then used for installation works of outer walls such as glass frames, by hoisting the wire rope from above in several stages. This is one of the most popular applications for mini cranes which can create shorter construction periods and cut costs by avoiding the use of expensive tower cranes.



MC285C Japan



MC285C Malaysia



MC285C Construction Glass Lifting Bucharest



MC305C



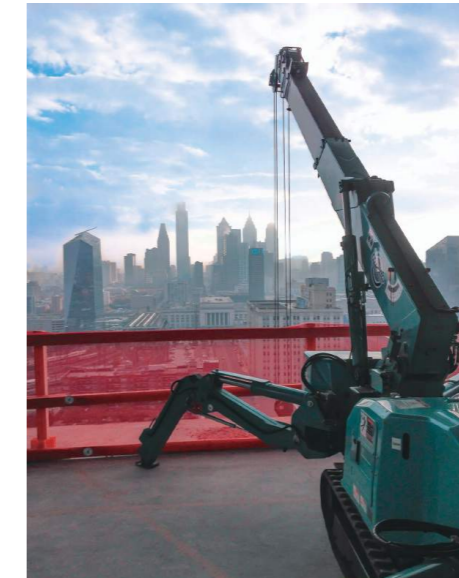
MC305C Australia

4. Rooftop Work

Lightweight mini cranes can be placed on rooftops and lift materials from the ground. There is no need to block roads for the use of bigger cranes, and works normally carried out by tower cranes can be taken on by mini cranes. So shorter construction periods and cost cuttings can be achieved. The mini cranes can be lifted up to rooftops easily by tower cranes or elevators.



MC305C New York City



MC285C Philadelphia Skyline



MC405C US



MC305C Australia



MC305C Australia



MC405C Las Vegas



MC305C US



MC104C

5. Steel Erection & Building Construction

For steel erection works inside various building and on rooftop, and for steel tower erection works.



MC285C



MC285C Construction Dubai Princess Tower



MC285C Rooftop Work



MC405C Houston Office Block



MC405C



MC305C Construction



MC405C Poland



LC785 Steel



MC305C Stahlbau Bea Halle Messe Bern



MC305C Construction Indoor



MC405C Steel Erection Kyle Field



LC1385 Steel Tower



LC383 Construction

6. Civil Construction

For lifting works of construction materials at airports, train stations, dam construction sites and many more. With its advantageous accessibility to confined places, our mini cranes have been used during the construction of many world famous facilities.



MC405C US Soldier Field Concourse



MC405C Stadium Poland



LC785 Station Germany



MC405C Power Plant Sweden



MC305C Dum Japan

7. Residential Construction

For residential material lifting from inside and outside of residences. Easy access from the edge of cliffs through to courtyards is our mini crane's specialty, which bigger cranes cannot do.



MC305C



MC305C House Construction



MC305C



LC1385 Construction Belgium



LC785 Construction



LC1385 Construction

8. Plant, Factory & Automotive

For maintenance of equipment, line replacement and material lifting where overhead cranes are not available and places without enough space such as automotive manufacturers, chemical plants, and factories.



MC285C



MC405C Poland



MC305C Switzerland



LC383 Factory Maintenance



MC305C Maintenance In Factory



LC785 Factory Maintenance



LC785 US



MC285C Plant US

9. Limited Access

The slim body width of our mini cranes means that access through doorways is an easy job, and works can be carried out indoors or in restricted areas. At construction sites where you would have to block roads to use bigger cranes, mini cranes with their compact body can easily access and reduce costs.



MC104C Limited Job Site Access



MC174C Elevator Australia



MC405C Poland



MC285C Restricted Access



MC405C Courtyard



MC285C Up to 40th Floor



MC285C Doorway US



MC405C Doorway Poland



MK1033C Restricted Access



LC785 US



LC1385 Belgium

10. Facility Equipment Installation

With its great accessibility, Maeda's mini cranes are used for the installation works of display panels, signs, and more at large commercial building such as shopping malls, stadiums, and theatres.



MC285C Ice Bar Germany



MC285C Glazing at Mall Australia



MC305C Mall Poland



MC285C Display Installation



MC285C Sign Installation



MC305C Panel Installation Mall



MC405C Sign Install - Inside Football Stadium US

11. Artwork Installation

For artwork installation in buildings that can be difficult to access such as museums and inner courts. Smooth maneuverability makes handling of delicate artworks possible, and the electric motor power option is suitable for indoor work without exhaust fumes.



MC285C F1 Car Art



MC305C



MC285C Artwork Installation US Museum



MC104C Denmark Museum



MC285C



MC305C Artwork Installation



MC285C Guggenheim



MC405C Polish Film



LC785

12. Aviation Industry

For maintenance (dock maintenance) and component replacement of airplanes and helicopters inside maintenance facilities. Our compact mini spiders have even been transported by aircraft to remote locations for maintenance work.



MC305C Helicopter Maintenance



MC305C



MC285C



MC405C Aircraft Maintenance



MC305C



MC305C

13. Stonework

Our mini cranes were born out of the need for a machine to access the extremely narrow passageways in Japanese graveyards. Now they are used for the installation of grave stones, garden stones and monumental stones all over the world.



MC104C



MC285C



MC405C Graveyard Poland



MC285C Japan



MC285C



MC305C

14. Power Stations

At power stations and substations where power lines are all over the place, computerized working range restriction feature prevents booms from connecting with power lines, so lifting works can be carried out safely.



MC405C Power Station Quebec



MC285C



MC285C



MC285C Mexico



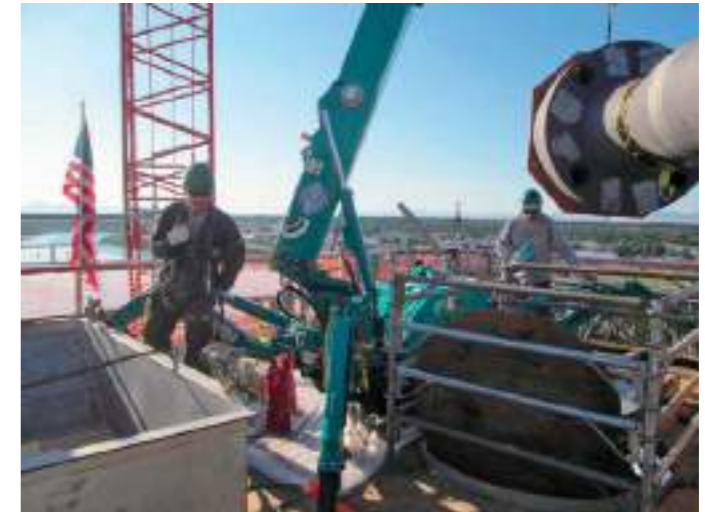
MC305C

15. Oil & Gas Industry

Because of its compact body, transportation to mining locations is very easy. Our mini cranes are used at oil rigs in the middle of jungles, and for resource development, refinery, gas plant and mining facilities.



MC285C Plant in Florida US



MC285C Refinery Montana US



LC1385 Oil Site Rig Up Brazil



LC785 Refinery Montana US



LC1385 On Site Rig Up of QG 5 Brazil

16. Tunnel / Underground

Mini cranes are often used for works inside tunnels for subway, underground road, underground facility, water line and electrical line where working space is limited.



MC305C Tunnel



LC785 Flood Control Japan



MC405C Tunnel Australia



LC1285 Shaft Japan



MC305C

17. Railway

For material lifting and maintenance from the side of the rail road and on the rail road.



MC285C Railway Australia



MC285 Train Japan



MC305C Railway



LC785 Railway Difficult Access To Lift



LC785 US Railroad Bridge - Active Track On Far Side



LC785

18. Works on Uneven Ground

With their crawler tracks, mini cranes can access the most uneven ground. The cranes can be balanced at a level position using the four outriggers, it can even be used on stairs and uneven ground.



MC305C



MC305C

19. Military

For maintenance work on military helicopters. MAEDA's spider cranes are compact and lightweight so are often transported to remote locations for use.



MC285C Acft Recovery



MC285C US Army Heli Maintenance



MC285C US Army Heli Maintenance



MC405C US Air Force



MC305C Army Italy



MC405C Loaded Into Aircraft

20. Forestry

Even on mountains where access is difficult with hilly terrain and no paved surfaces, mini spider cranes are used to lift cut lumbers.



MC305C Lumber Work Japan



MC305C Forestry



MC305C Monorail Japan

22. Other Works

The compact body can be transported to various places and enables many kinds of lifting work.



MC305C Angor Thom Restoration

21. Marine Construction, Ship Building and On Board Ships

Compact and light weight mini cranes play an active part during lifting works carried out at coastal locations, ship yards, and on board ships.



MC285C Ship Deck US



MC405C Copenhagen Harbour



MC305C Ship Yard



MC285C Ship Glazing On Upper Deck Of Cruise Ship US



MC285C x 2 Brighton Pier



MC285C Weston Pier



MC104C Einsatz Zugspitze



MC174C Machine Lift



MC285C Construction Sky Tower



MC305C Africa



MC405C Bergbahn Rigi-Kulm



MC405C Attachment